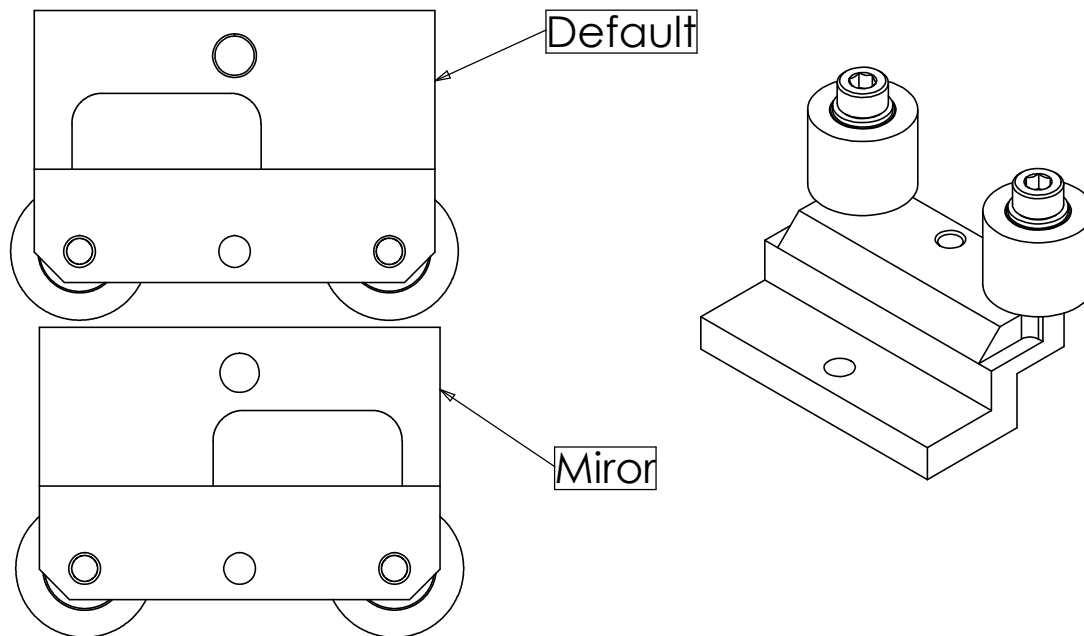
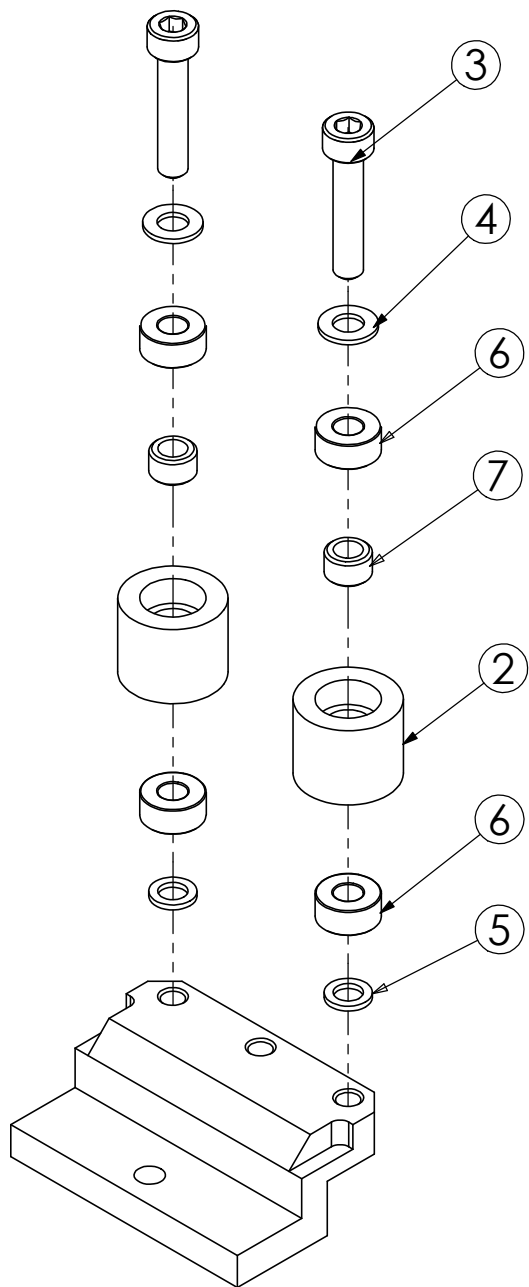


| REVISIONS | | | | |
|-----------|------|------------------------------------|---------|----------|
| ZONE | REV. | DESCRIPTION | DATE | APPROVED |
| | 2 | Changed spacer to a Bearing Spacer | 03MAY16 | EE |



| ITEM NO. | PartNo | DIS PART NUMBER | DESCRIPTION | QTY. |
|----------|------------------|------------------------------|------------------------------|------|
| 1 | FID-1025-M | Belt BR Support Plate Mirror | Belt BR Support Plate Mirror | 1 |
| 2 | ALSI15T5-SE\12-0 | M1-PY-0130 | Inserting Belt Pulley Idle | 2 |
| 3 | 91292A129 | M1-SC-0182 | M5-.8X25MM SHCS | 2 |
| 4 | 93475A240 | M1-WS-0060 | M5 Washer | 2 |
| 5 | WSSS8-5-1 | M1-WS-0120 | ZM-SP Pipe Cen Swing Arm | 2 |
| 6 | B685ZZ | M1-BE-0170 | Bearing | 4 |
| 7 | CLBPS5-8-5 | M1-WS-0191 | Bearing Spacer | 2 |

dis drip irrigation systems
INNOVATION IN IRRIGATION

PROPRIETARY AND CONFIDENTIAL

THE INFORMATION CONTAINED IN THIS DRAWING IS THE SOLE PROPERTY OF DRIP IRRIGATION SYSTEMS (DIS). ANY REPRODUCTION IN PART OR AS A WHOLE WITHOUT THE WRITTEN PERMISSION OF DIS IS PROHIBITED.

TITLE:
Belt Support Unit (Default / Mirror)

| | | |
|------------------|---------------|-----------------|
| SIZE A | DWG. NO. - | REV 2 |
|------------------|---------------|-----------------|

DO NOT SCALE DRAWING

SCALE: 4:5

SHEET 1 OF 1